

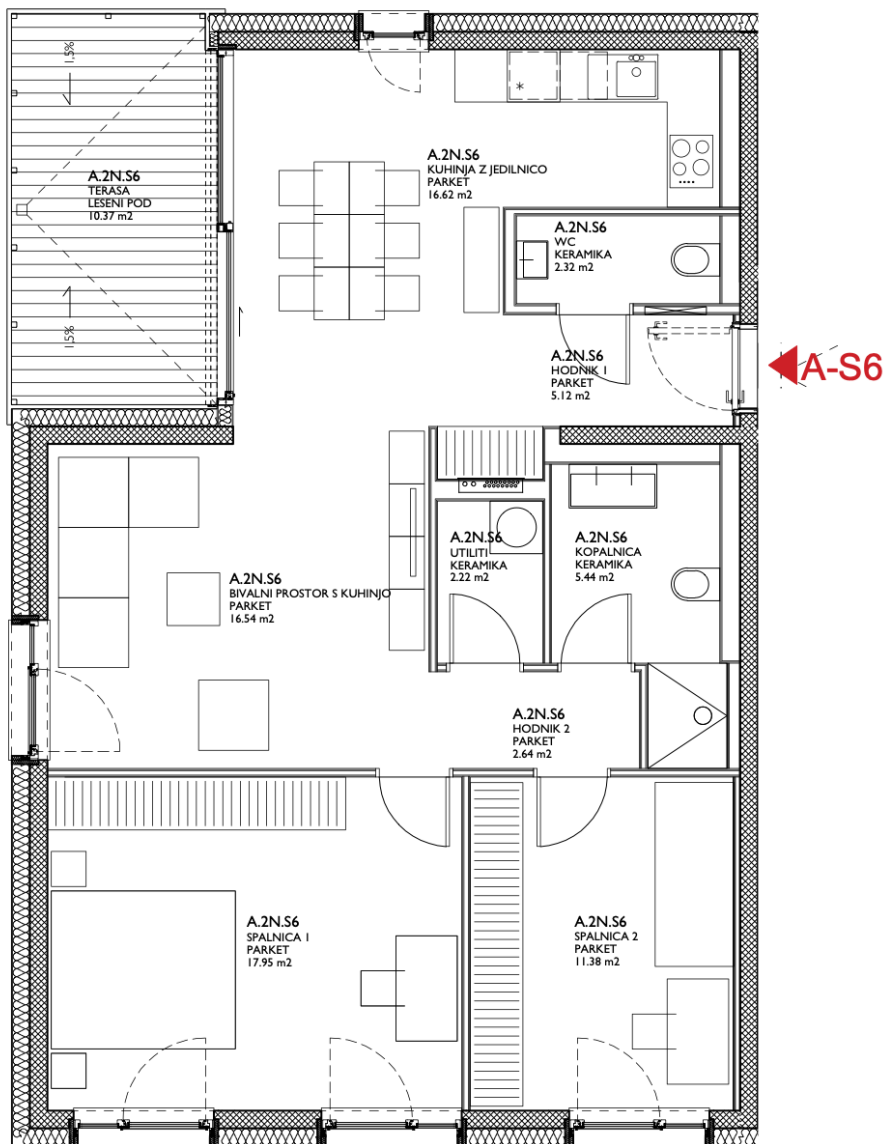
# Vila Nova - A

Nadstandardna večstanovanjska objekta

Cesta na Brdo / Poklukarjeva ulica

## STANOVANJE A-S6

2. nadstropje



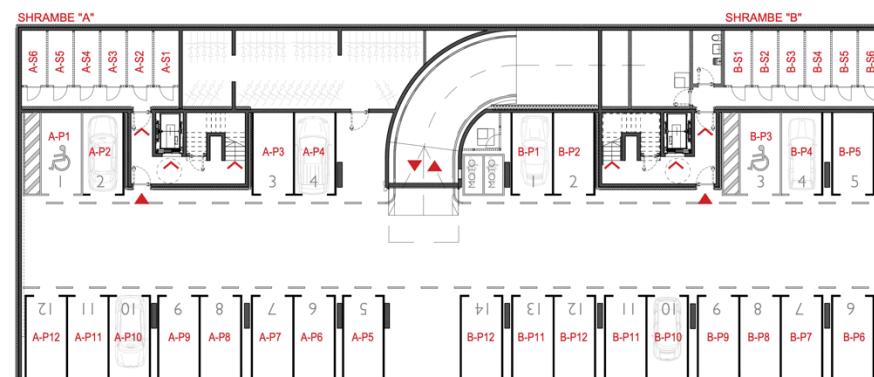
### Stanovanje A-S6

Prostor	Tlak	Površina
Bivalni prostor s kuhinjo	Parket	16,54 m <sup>2</sup>
Hodnik 1	Parket	5,12 m <sup>2</sup>
Hodnik 2	Parket	2,64 m <sup>2</sup>
Kopalnica	Keramika	5,44 m <sup>2</sup>
Kuhinja z jedilnico	Parket	16,62 m <sup>2</sup>
Spalnica 1	Parket	17,95 m <sup>2</sup>
Spalnica 2	Parket	11,38 m <sup>2</sup>
Utiliti	Parket	2,22 m <sup>2</sup>
WC	Keramika	2,32 m <sup>2</sup>

**Skupaj: 80,23 m<sup>2</sup>**

Terasa	Les	10,37 m <sup>2</sup>
Shramba		4,98 m <sup>2</sup>

2 x Parkirno mesto



\*Prikaz shrambe in parkirnega mesta v garaži