

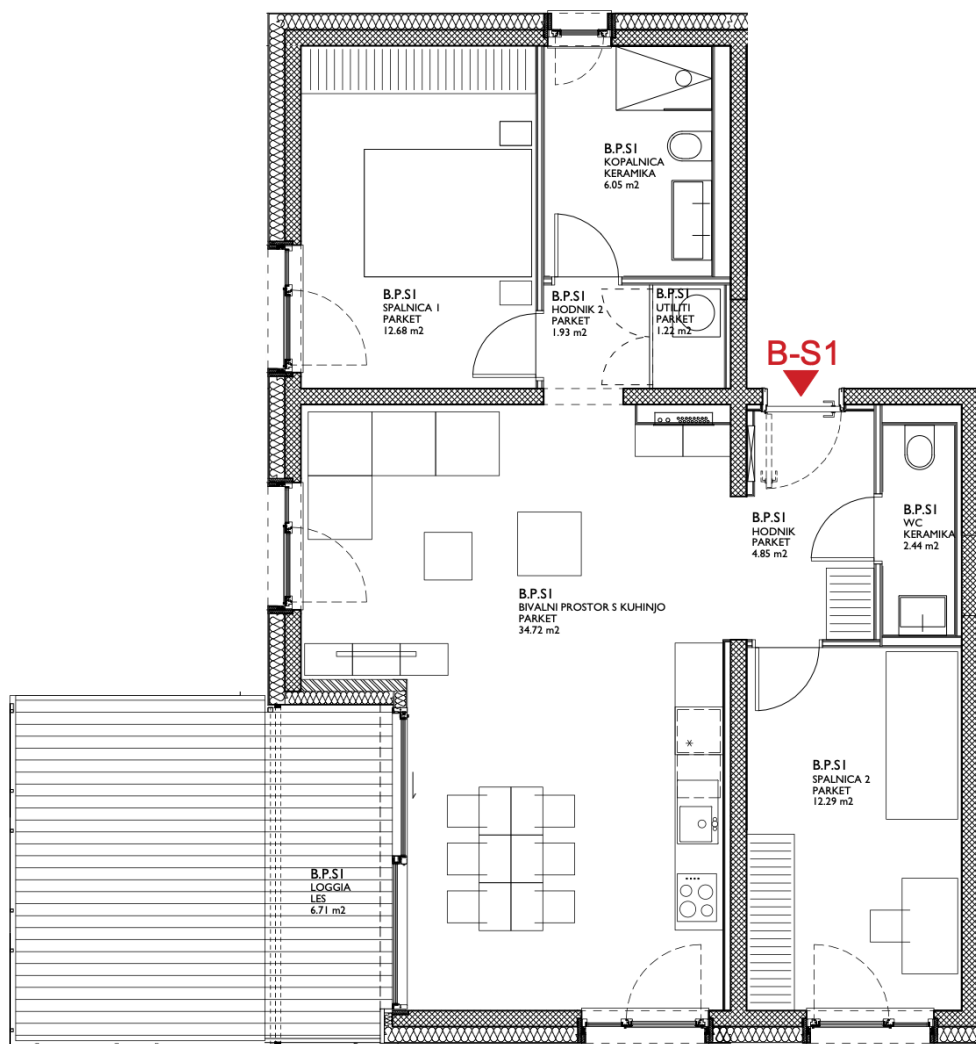
STANOVANJE B-S1

Pritličje

Vila Nova - B

Nadstandardna večstanovanjska objekta

Cesta na Brdo / Poklukarjeva ulica

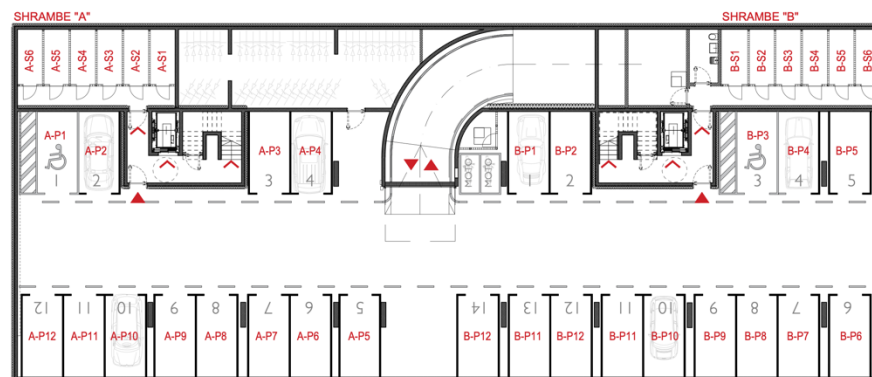


Stanovanje B-S1

Prostor	Tlak	Površina
Bivalni prostor s kuhinjo	Parket	34,72m ²
Hodnik 1	Parket	4,85m ²
Hodnik 2	Parket	1,93m ²
Kopalnica	Keramika	6,05m ²
Spalnica 1	Parket	12,68m ²
Spalnica 2	Parket	12,29m ²
Utiliti	Parket	1,22m ²
WC	Keramika	2,44m ²

Skupaj: 76,18m²

Loggia	Les	6,66m ²
Atrij		24,75m ²
Shramba		4,98m ²
2 x Parkirno mesto		



*Prikaz shrambe in parkirnega mesta v garaži